

**DESCRIPTION** **auto-klean**® 10J, 15J and 20J self-cleaning filters are of all-metal plate-type construction and operate on the edge-filtration principle. The filters are cleaned without interrupting the flow of liquid by one complete turn of the handle attached to the element spindle. This action deposits all the solids accumulated around the element into the filter sump. Standard filter bodies incorporate a sump drain plug, but a drain valve is fitted if required. A magnetic insert can be incorporated in the sump drain plug to give added protection against ferrous particles. Tapped holes for mounting screws are provided on opposite sides of the cover to facilitate installation. These filters can be supplied with either electric motors or ratchet-drive for fully automatic or continuous cleaning. Steam-jacketed designs are available for high temperature service.

10J, 15J and 20J filters for turbine and diesel engine thrust block service are provided with a special cock, which enables the filter to be by-passed in case of an emergency.

**APPLICATIONS** All grades of oils and distillates, water, chemicals, beverages, food products, paints, resins, greases, pulp and industrial liquids of every kind.

**ELEMENTS**

Diameter	56mm (2.2")
Length	190mm (7½") nett.
Mesh	.025mm (.001") .038mm (.0015") .076mm (.003") .127mm (.005") .203mm (.008") .254mm (.010") .381mm (.015") .508mm (.020") 1.016mm (.040")

**CONNECTIONS** 25.4mm (1"), 38.1mm (1½"), 50.8mm (2") to B.S. Table E

**PRESSURE** Maximum Working 7 Kg/cm<sup>2</sup> (100 lb/in<sup>2</sup>) at 121°C (250°F)  
Test 14 Kg/cm<sup>2</sup> (200 lb/in<sup>2</sup>).  
Models suitable for operation at higher pressures are available if required.

**MATERIALS**

Standard	Body & Cover	Cast Iron
	Internals	Mild & Stainless Steel, Brass
Special	Body & Cover	Monel Metal
		Mild or Stainless Steel, Gunmetal, Aluminium Alloy

**SUMP CAPACITIES** 262cm<sup>3</sup> (16in<sup>3</sup>)

**WEIGHTS** Filter complete 18 Kg (40lb)  
Element only 4.5 Kg (10lb)

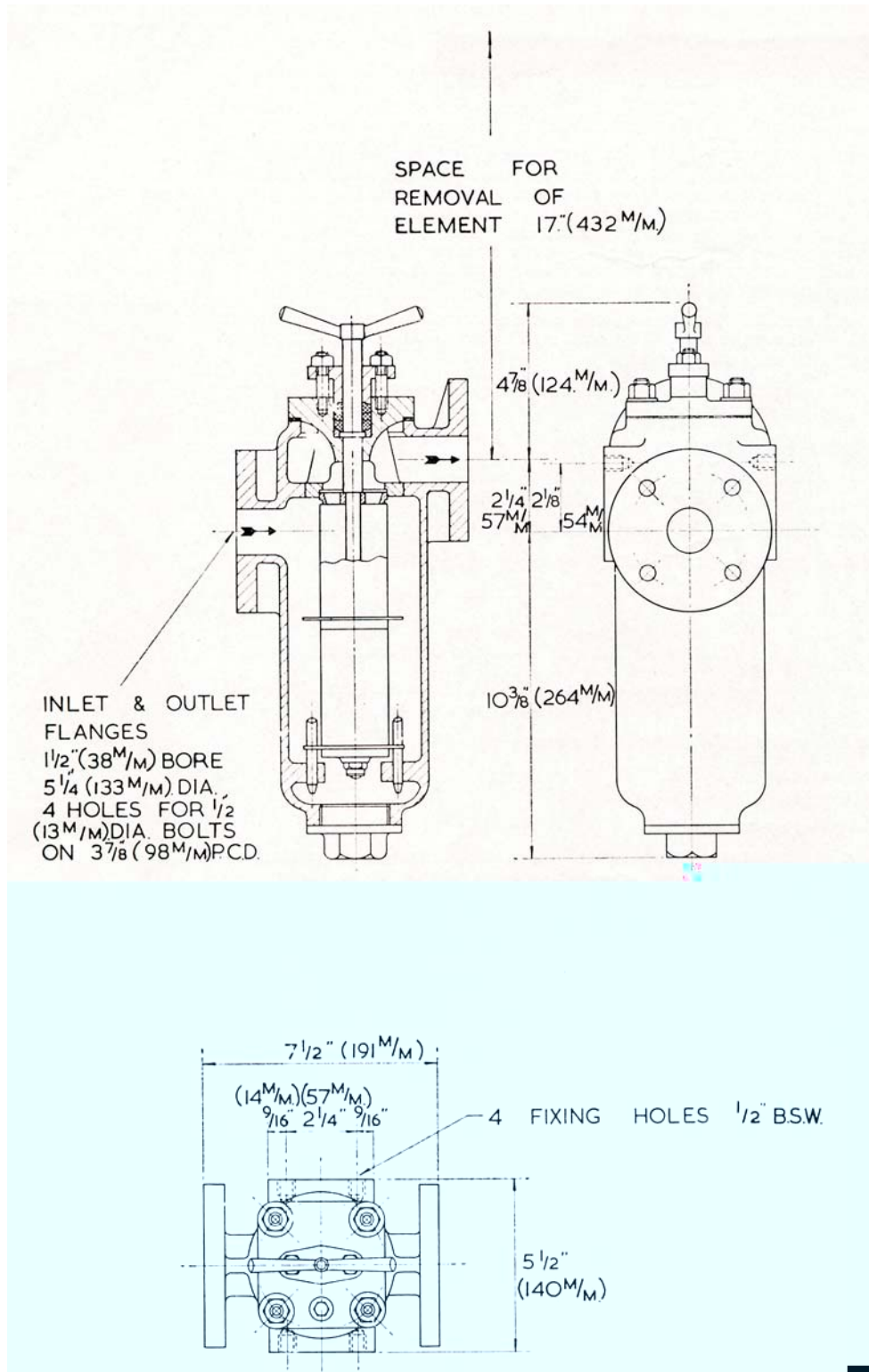
**DIMENSIONS** See drawing on page 2

**FLOW RATES** The flow rates listed below cover only a limited range of applications. Capacities for other liquids and filter meshes will be quoted on request. For discharge filters the capacities are based on a pressure drop of 0.1 to .015 Kg/cm<sup>2</sup> (1.5 to 2lb/in<sup>2</sup>) across a clean element.

Maximum flow rate for any conditions **18 metres<sup>3</sup> (4,000 gallons)** per hour.



Service	Auto-Klean Mesh		Equivalent Gauze Mesh	Free Area		Capacity					
	mm	in		cm <sup>2</sup>	in <sup>2</sup>	Gallons Per Hour			Litres Per Hour		
Engine & Thrust Block Lubricating Oil Discharge	.038	.0015	200 x 200	22.7	4.3	250			8.1°		
	.076	.003	150 x 150	49.7	7.7						
	.127	.005	100 x 100	74.8	11.6	1500			6819		
						1700			7728		
Machine Tool Lubricating Oil Discharge					500			16.2° 32.5° 65°			
	.076	.003	150 x 150	49.7	7.7	950	500	260	4319	2273	1182
	.127	.005	100 x 100	74.8	11.6	1200	750	400	5455	3410	1818
Diesel Fuel Oil Gravity Feed 1ft. head					35 to 60			1.3° to 2.1°			
	.038	.0015	200 x 200	27.7	4.3	350			1591		
	.076	.003	150 x 150	49.7	7.7	500			2273		
Boiler Fuel Oil Discharge					Up to 200			Up to 6.5°			
	.127	.005	100 x 100	74.8	11.6	1900			8637		
	.254	.010	60 x 60	118.7	18.4	2100			9548		
Water and Aqueous Solutions					2180			9910			
	.076	.003	150 x 150	49.7	7.7	2230			10138		
	.254	.010	60 x 60	118.7	18.4						



## Type 15J

**auto-klean<sup>®</sup> filtration limited**

Engineers in Filtration

Unit 11a, Ascot Industrial Estate,  
 Lenton Street,  
 Sandiacre,  
 Notts. NG10 5DJ, U.K.

Tel. 0870 421 4206  
 Fax. 0870 421 4207

[www.auto-kleanfiltration.co.uk](http://www.auto-kleanfiltration.co.uk)  
 E-Mail: [sales@hse-ltd.com](mailto:sales@hse-ltd.com)