

DESCRIPTION auto-klean® 15JP self-cleaning filters are of all-metal plate-type construction and operate on the edge-filtration principle. The filter is cleaned without interrupting the flow of liquid by one complete turn of the handle attached to the element spindle. This action deposits all the solids accumulated around the element into the filter sump. Magnetic inserts are incorporated in the sump drain plugs to give additional protection against ferrous particles. 15JP filters can be supplied with either an electric motor or ratchet-drive for fully automatic or continuous cleaning. Special steam-jacketed designs are available for high temperature service.

APPLICATIONS For high pressure service up to 28 Kg/cm² to 400 lb/in². All grades of oils and distillates, water, chemicals, food products, paints, greases and industrial liquids of every kind.

ELEMENTS

Diameter	56mm (2.2")
Length	180mm (7½" nett.
Mesh	.038mm (.0015") .076mm (.003") .127mm (.005") .203mm (.008") .254mm (.010") .381mm (.015") .508mm (.020") 1.016mm (.040")

CONNECTIONS

Standard	38.1mm (1½")	B.S. Table H
Special	38.1mm (1½")	B.S. Table J or K
	25.4mm & 50.8mm (1" and 2")	B.S. Tables H, J or K

PRESSURE

Maximum Working	28 Kg/cm ² (400 lb/in ²)
Test	42 Kg/cm ² (600 lb/in ²).

MATERIALS

Standard	Body & Cover	Cast Iron
	Internals	Mild & Stainless Steel, Brass
		Monel Metal
Special	Body & Cover	Mild or Stainless Steel

SUMP CAPACITY 230cm³ (14in³)

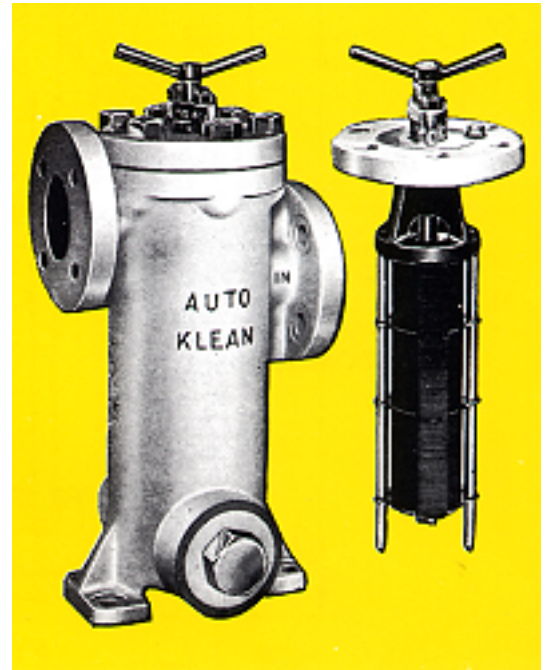
WEIGHT

Filter complete	25 Kg (56lb)
Element only	6 Kg (13lb)

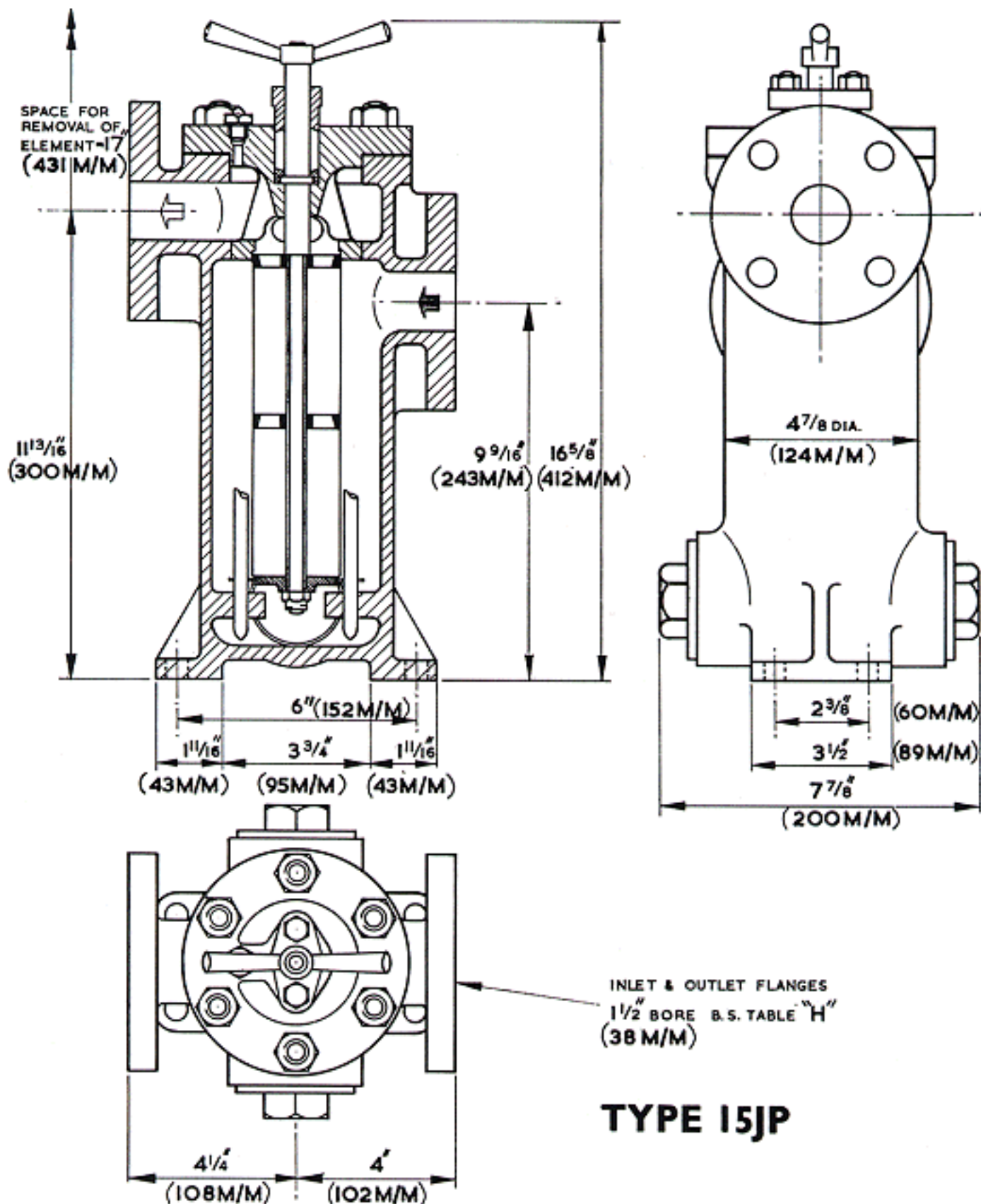
DIMENSIONS See drawing on page 2

FLOW RATES The flow rates listed below cover only a limited range of applications. Capacities for other liquids and filter meshes will be quoted on request. For discharge filters the capacities are based on a pressure drop of 0.1 to .015 Kg/cm² (1.5 to 2lb/in²) across a clean element.

Maximum flow rate for any conditions **16 metres³ (3,500 gallons)** per hour.



Service	Auto-Klean Mesh		Equivalent Gauze Mesh	Free Area		Capacity					
	mm	in		cm ²	in ²	Gallons Per Hour			Litres Per Hour		
						Viscosity Seconds Redwood No.1			Viscosity Engler Degrees		
						250	500	1000	8.1°	16.2°	32.5°
Lubricating	.038	.0015	200 x 200	22.7	5.75	700	350	200	3180	1591	909
Oil Discharge	.076	.003	150 x 150	49.7	10.4	1500	950	500	6819	4319	2273
Boiler Fuel Oil	.127	.005	100 x 100	74.8	15.3	1800	1200	800	8170	5455	3640
						Up to 200			Up to 6.5°		
Hot Discharge	.127	.005	100 x 100	74.8	10.4	1900			8637		
	.254	.010	60 x 60	118.7	15.3	2100			9548		
						60 to 150			2.1° to 4.9°		
Hydraulic Oil	.038	.0015	200 x 200	27.7	5.75	1000			4546		
	.076	.003	150 x 150	49.7	10.4	1800			8183		
Water and Aqueous Solutions	.127	.005	100 x 100	74.8	15.3	2200			10000		
	.254	.010	60 x 60	118.7	24.6	2230			10138		
	.508	.020	30 x 30	163.8		2250			1028		



auto-klean[®] filtration limited

Engineers in Filtration

Unit 11a, Ascot Industrial Estate,
 Lenton Street,
 Sandiacre,
 Notts. NG10 5DJ, U.K.

Tel. 0870 421 4206
 Fax. 0870 421 4207

www.auto-kleanfiltration.co.uk
 E-Mail: sales@hse-ltd.com

Auto-Klean is a registered Trade Mark