

DESCRIPTION auto-klean® 20L, 25L and 30L self-cleaning filters are of all-metal plate-type construction and operate on the edge-filtration principle. They are cleaned without interrupting the flow of liquid by one complete turn of the handle attached to the element spindle. This action deposits all the solids accumulated around the element into the filter sump. The filter bodies incorporate support brackets, pressure gauge bosses, a drain valve and a sludge door as standard fittings. When required magnetic inserts are incorporated in the filter body to give additional protection against micronic ferrous particles. These filters can be supplied with electric motors or ratchet-drive for continuous cleaning.

APPLICATIONS All grades of oils and distillates, water, chemicals, beverages, food products, paints, resins, greases, pulp and industrial liquids of every kind.

ELEMENT	Diameter	80mm (3.15")
	Length	181mm (7 ¹ / ₈ " net).
	Mesh	.038mm (.0015") .076mm (.003") .127mm (.005")
		.203mm (.008") .254mm (.010") .508mm (.020")
		1.016mm (.040")

CONNECTIONS Standard 50.8mm (2"), 63.5mm (2¹/₂"), 76.2mm (3") to B.S. Table E
Special 50.8mm (2"), 63.5mm (2¹/₂"), 76.2mm (3") to B.S. Tables H, J or K

PRESSURE Maximum Working 5.27 Kg/cm² (75 lb/in²)
Test 10.55 Kg/cm² (150 lb/in²).

MATERIALS	Standard	Body & Cover Internals	Cast Iron Mild & Stainless Steel, Brass
	Special	Body & Cover	Mild or Stainless Steel, Aluminium Alloy

SUMP CAPACITY 3.6 litres (220in³)

WEIGHT Filter complete 68 Kg (150lb) Element only 15 Kg (33lb)

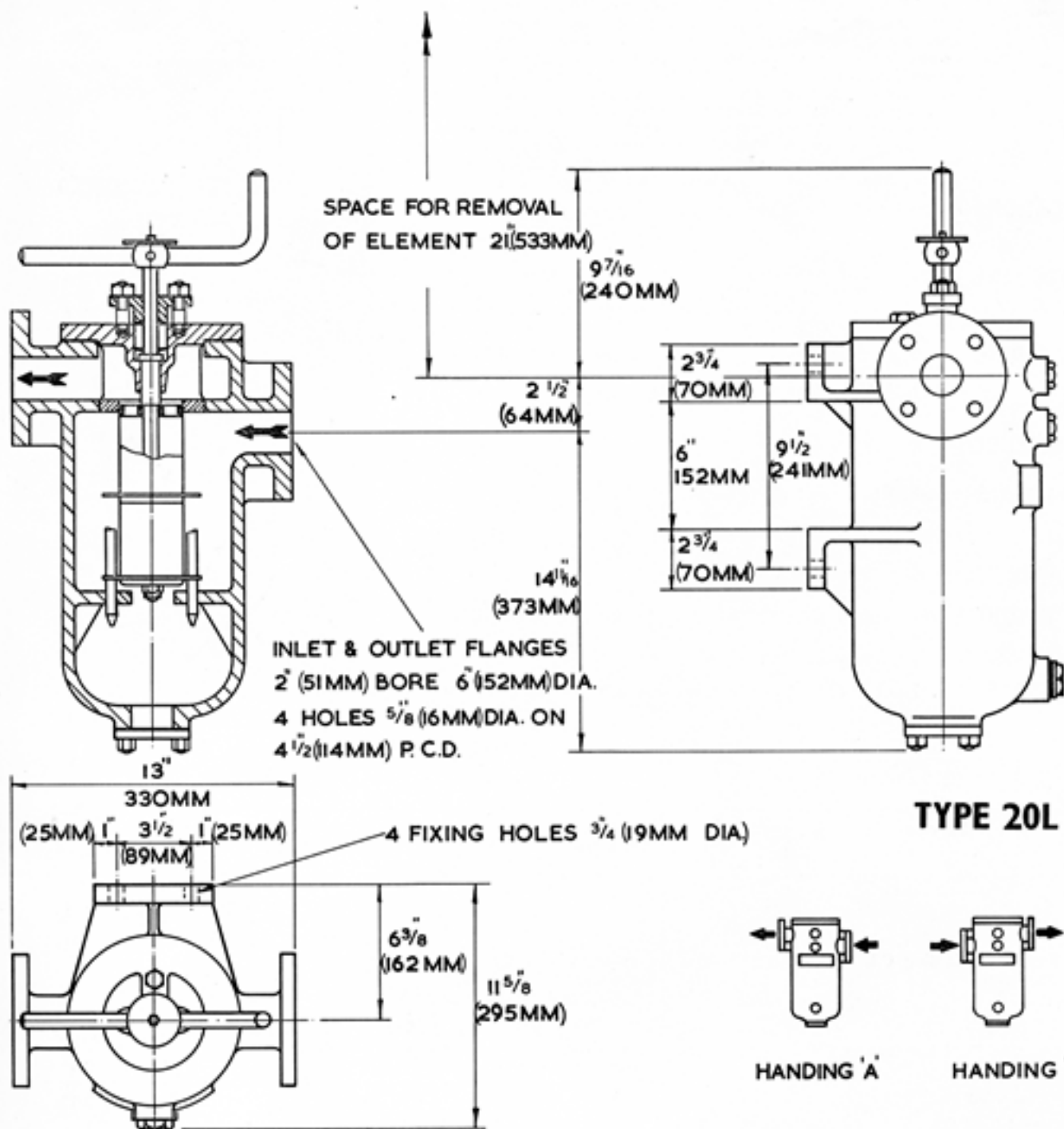
DIMENSIONS See drawing on page 2

FLOW RATES The flow rates listed below cover only a limited range of applications. Capacities for other liquids and filter meshes will be quoted on request. For discharge filters the capacities are based on a pressure drop of 0.1 to .015 Kg/cm² (1.5 to 2lb/in²) across a clean element.

Maximum flow rate for any conditions **22.7 metres³ (5,000 gallons) per hour.**



Service	Auto-Klean Mesh		Equivalent Gauze Mesh	Free Area		Capacity					
	mm	in		cm ²	in ²	Gallons Per Hour			Litres Per Hour		
Engine Lubricating Oil Discharge	.038 .076 .127	.0015 .003 .005	200 x 200 150 x 150 100 x 100	30.3 56.1 83.2	4.7 8.7 12.9	Viscosity Seconds Redwood No.1			Viscosity Engler Degrees		
						250			8.1°		
						1050 2000 3000			4773 9092 13638		
						500 1000 2000			16.2° 32.5° 65°		
						1200 780 360 2100 1250 650			5455 3546 1637 9547 5683 2960		
Machine Tool Lubricating Oil Discharge	.076 .127	.003 .005	150 x 150 100 x 100	56.1 83.2	8.7 12.9	35 to 60			1.3° to 2.1°		
						1100 1900			5000 8640		
						1000 2000 3000			32.5° 65° 98°		
Diesel Fuel Oil Gravity Feed 1ft. head	.038 .076	.0015 .003	200 x 200 150 x 150	30.3 56.1	4.7 8.7	Up to 200			Up to 5.7°		
						1600 850 600 1850 1000 700			7274 3864 2730 8410 4550 3180		
Boiler Fuel Oil Discharge	.127 .254	.005 .010	100 x 100 60 x 60	74.8 118.7	11.6 18.4	Ford Cup No. 4					
						5 38 120			5 38 120		
Hot Discharge	.254	.010	60 x 60	23.2	149.6	5			5		
						2000 450 250			9090 2045 1140		
						2500 1350 550			11363 6136 2500		
Paints & Enamels Discharge	.127	.005	100 x 100	83.2	12.9	3000 1620 900			13636 7363 4100		
						4000 5000			18180 22700		
						Water and Aqueous Solutions					
Water and Aqueous Solutions	.127 .508	.005 .020	100 x 100 30 x 30	83.2 208.3	12.9 32.3						



auto-klean® filtration limited

Engineers in Filtration

Unit 11a, Ascot Industrial Estate,
Lenton Street,
Sandiacre,
Notts. NG10 5DJ, U.K.

Tel. 0870 421 4206
Fax. 0870 421 4207

www.auto-kleanfiltration.co.uk
E-Mail: sales@hse-ltd.com