

DESCRIPTION **auto-klean**® 30L2 self-cleaning filters are of all-metal plate-type construction and operate on the edge-filtration principle. They are cleaned without interrupting the flow of liquid by one complete turn of the handles attached to the filter element spindles. This deposits all the solids accumulated around the elements into the filter sump. The filter bodies incorporate support brackets, pressure gauge bosses, a drain valve and sludge door as standard fittings. Magnetic inserts can be incorporated in the filter body to give additional protection against ferrous particles. These filters can be supplied with electric motors or ratchet-drive for fully automatic or continuous cleaning. Steam-jacketed designs are available for high temperature service.

APPLICATIONS All grades of oils and distillates, water, chemicals, beverages, food products, paints, resins, greases, pulp and industrial liquids of every kind.

ELEMENTS

Number 2 Diameter	80mm (3.15")
Length	181mm (7¼") nett.
Mesh	.38mm (.0015") .076mm (.003") .127mm (.005") .203mm (.008") .254mm (.010") .381mm (.015") .508mm (.020") 1.016mm (.040")

CONNECTIONS 76.2mm (3") to B.S. Table E.

PRESSURE Maximum Working 5.27Kg/cm² (75lb/in²)
Test 10.5Kg/cm² (150lb/in²)
Filters suitable for operation at higher pressures can be supplied if required.

MATERIALS

Standard	Body & Cover Internals	Mild Steel Mild & Stainless Steel, Brass
Special	Body & Cover	Stainless Steel, Cast Iron or Gun-metal

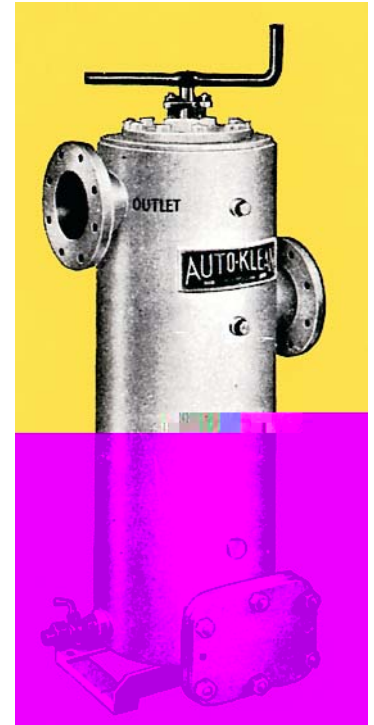
SUMP CAPACITY 13.6 litres (3 gallons)

WEIGHTS Filter complete 90.7kg (200lb)
Element only 15kg (33lb)

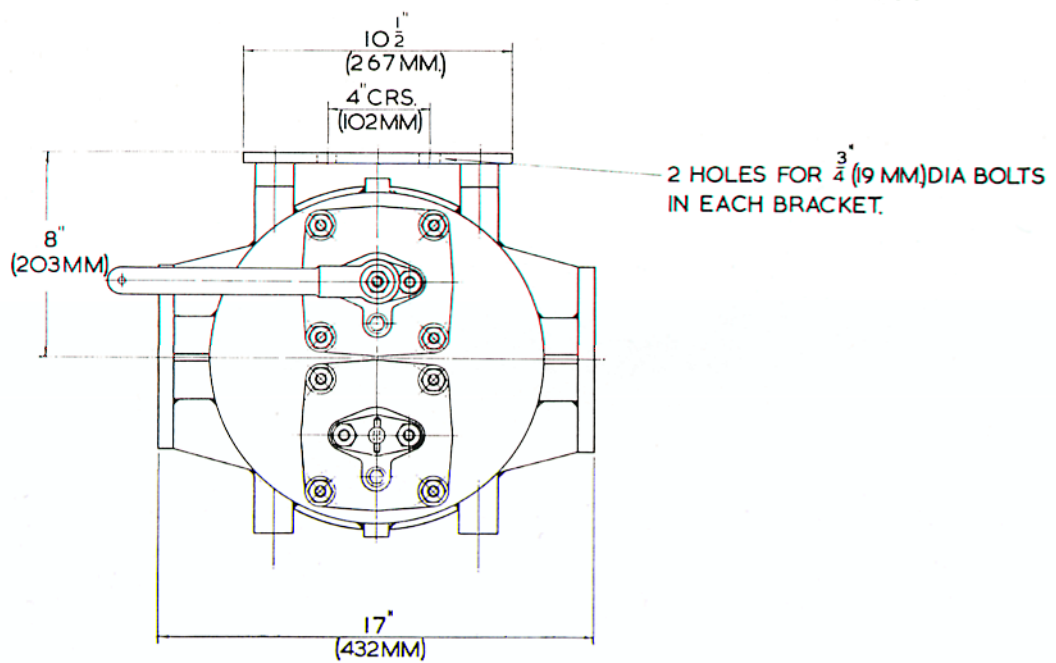
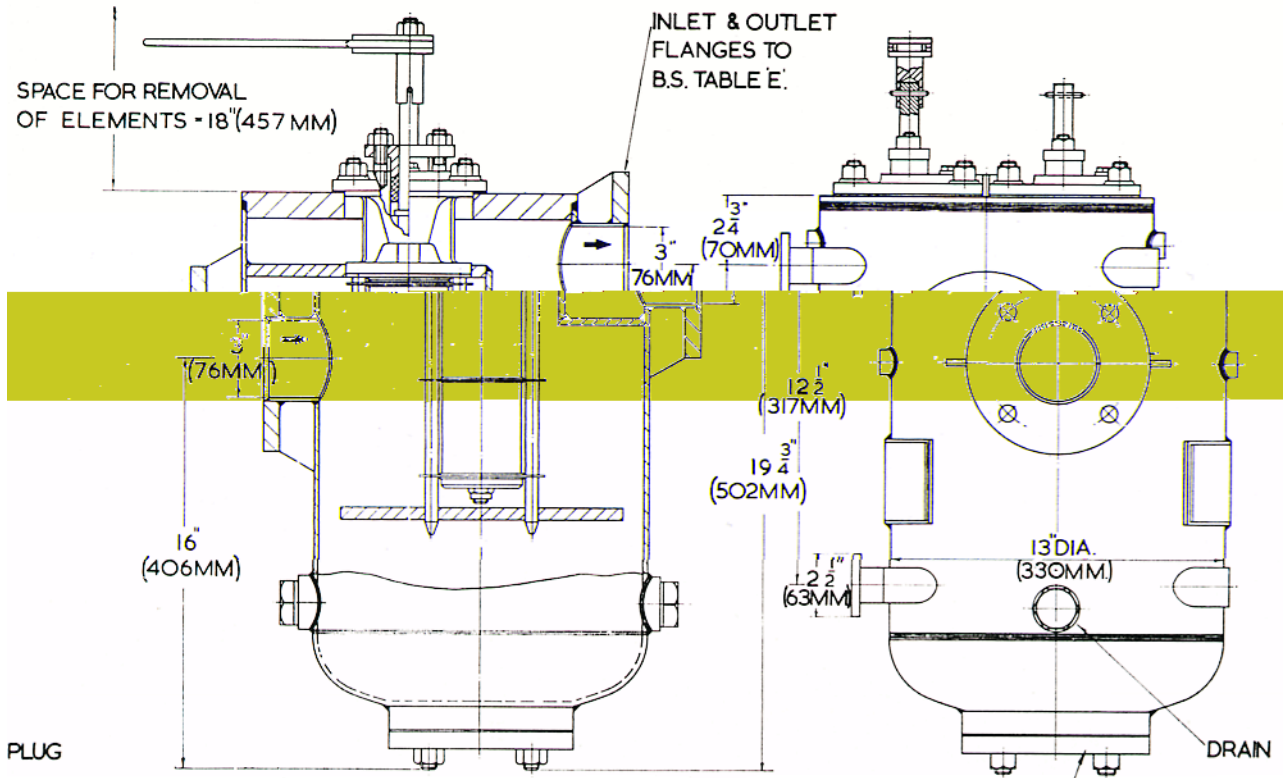
DIMENSIONS See drawing on page 2

FLOW RATES The flow rates listed below cover only a limited range of applications. Capacities for other liquids and filter meshes will be quoted on request. For discharge filters the capacities are based on a pressure drop of 0.1 to .015 Kg/cm² (1.5 to 2lb/in²) across a clean element.

Maximum flow rate for any conditions **45.6 metres³ (10,000 gallons) per hour.**



Service	Auto-Klean Mesh		Equivalent Gauze Mesh	Free Area		Capacity			
	mm	in		cm ²	in ²	Gallons Per Hour		Metres ³ Per Hour	
						Viscosity Seconds Redwood No.1		Viscosity Engler Degrees	
Engine Lubricating Oil Discharge	.038	.0015	200 x 200 150 x 150 100 x 100	78.7 144.5 229.6	12.2 22.4 35.6	250		8.1°	
	.076	.003				2100	9.5		
	.127	.005				4000	18.2		
	6000	27.3							
	1000	2000				32.5°	65°		
Machine Tool Lub. Oil Discharge	.076	.003	150 x 150 100 x 100	144.5 229.6	22.4 35.6	4560	720	7.1	3.3
	.127	.005				2500	1300	11.4	5.9
Water and Aqueous Solutions	.127	.005	100 x 100 60 x 60	229.6 304.4	35.6 47.2	8000		36.3	
	.254	.010				10000	45.6		



auto-klean® filtration limited

Engineers in Filtration

Unit 11a, Ascot Industrial Estate,
Lenton Street,
Sandiacre,
Notts. NG10 5DJ, U.K.

Tel. 0870 421 4206
Fax. 0870 421 4207

www.auto-kleanfiltration.co.uk
E-Mail: sales@hse-ltd.com