

# AUTO-KLEAN

## TYPES 60P2 70R2

**DESCRIPTION** auto-klean® 60P2 and 70R2 self-cleaning filters are of all-metal plate-type construction and operate on the edge-filtration principle. They are cleaned without interrupting the flow of liquid by one complete turn of the handles attached to the filter element spindles. This deposits all the solids accumulated around the elements into the filter sump. The filter bodies incorporate support brackets, pressure gauge bosses, a drain valve and sludge door as standard fittings. When required, magnetic inserts are incorporated in the filter body to give additional protection against micronic ferrous particles. These filters can be supplied with electric motors or ratchet-drive for fully automatic or continuous cleaning. For high temperature service steam-jacketed designs can be supplied.

**APPLICATIONS** All grades of oils and distillates, water, chemicals, beverages, food products, paints, resins, greases and industrial liquids of every kind.

**ELEMENTS**

Diameter	145mm (5.7")
Length	394mm (15.5") nett.
Mesh	.076mm (.003") .127mm (.005") .203mm (.008") .254mm (.010") .508mm (.020") 1.02mm (.040") 1.52mm (0.60") 2.03mm (0.80")

**CONNECTIONS** 152mm (6"), 178mm (7") to B.S. Table E.

**PRESSURE** Maximum Working 3.25Kg/cm<sup>2</sup> (50lb/in<sup>2</sup>)  
Test 7.00Kg/cm<sup>2</sup> (100lb/in<sup>2</sup>)

**MATERIALS**

Standard	Body Cover Internals	Mild Steel Cast Iron Mild & Stainless Steel, Brass
Special	Body & Cover	Mild or Stainless Steel

**SUMP CAPACITY** 36 litres (8 gallons)

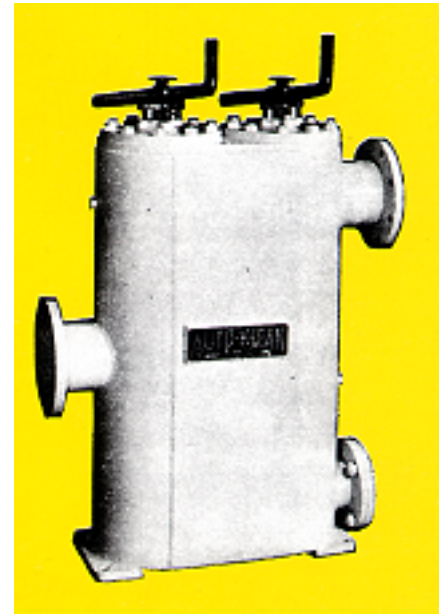
**WEIGHT**

	60P2	70R2
Filter complete	272Kg (600lb)	286Kg (630lb)
Element only	42kg (90lb)	47Kg (104lb)

**DIMENSIONS** See table on page 2

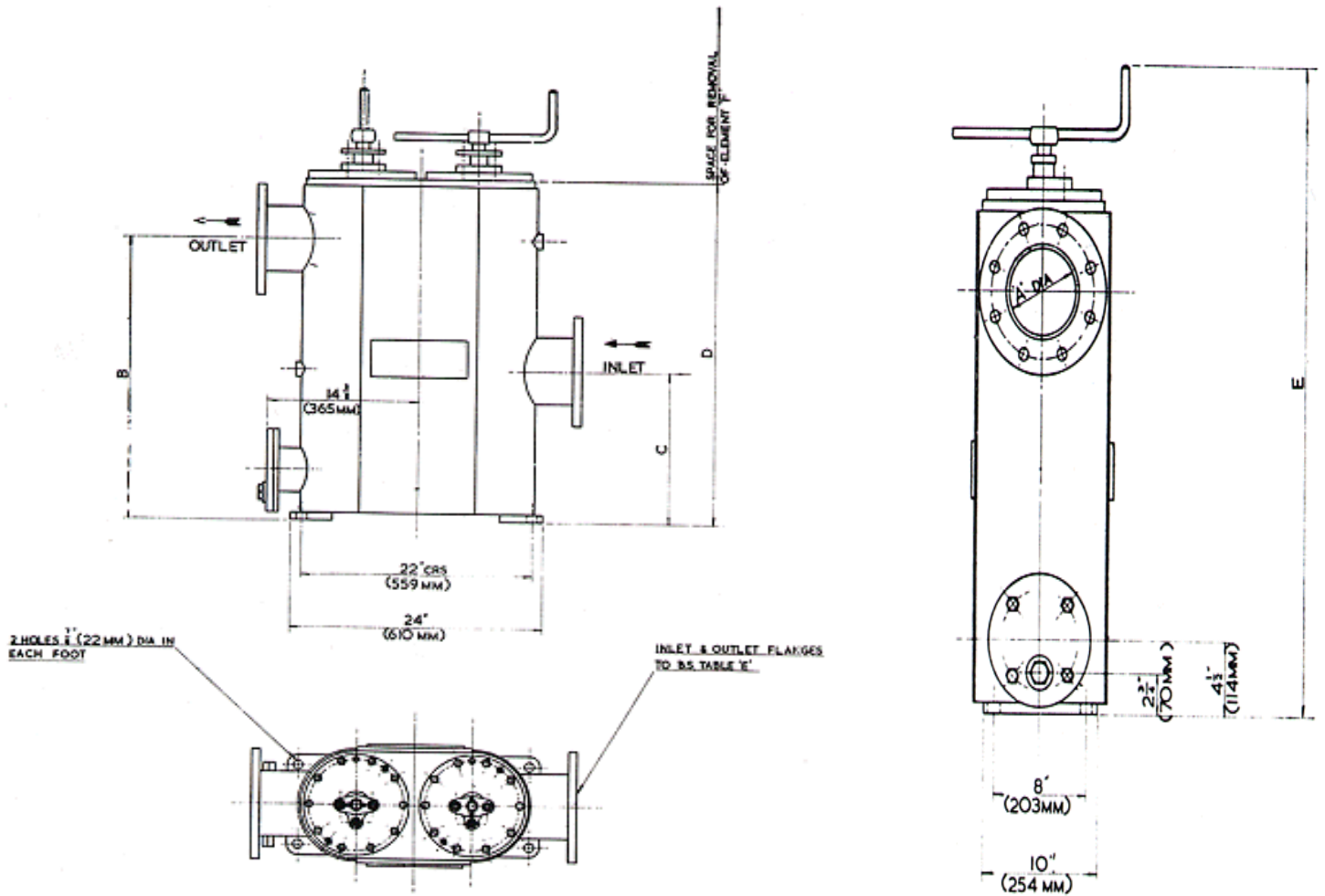
**FLOW RATES** The capacities listed below cover only a limited range of applications. Capacities for other liquids and filter meshes will be quoted on request. For discharge filters the capabilities are based on a pressure drop of 0.1 to .015 Kg/cm<sup>2</sup> (1.5 to 2lb/in<sup>2</sup>) across a clean element.

Maximum flow rate for any conditions **193 metres<sup>3</sup> (42,500 gallons) per hour.**



Service	Element Length		Auto-Klean Mesh		Equivalent Gauze Mesh	Free Area		Capacity					
	mm	in	mm	in		cm <sup>2</sup>	in <sup>2</sup>	Gallons Per Hour			Metres <sup>3</sup> Per Hour		
Engine and Heavy Machine Lub. Oil Discharge	394	15.5	.076	.003	150 x 150	323	50	Viscosity Seconds Redwood No.1			Viscosity Engler Degrees		
			.127	.005	100 x 100	490	76	250	1000	2000	8.1°	32.5°	65°
	508	20	.076	.003	150 x 150	418	64	12900	4200	2300	58.7	19.1	10.5
			.127	.005	100 x 100	645	100	21600	9400	5000	98.2	42.6	22.7
Boiler Fuel Oil Suction 2 ft. water gauge pressure loss	394	15.5	.508	.020	30 x 30	1309	203	17600	5600	3000	80.0	26.0	13.6
			1.02	.040	20 x 20	2000	310	29200	10600	5600	132.7	48.2	25.4
	508	20	.508	.020	30 x 30	1677	260	1000			32.5°		
			1.02	.040	20 x 20	2567	398	2000	3000	65°	100°		
Hot Discharge	394	15.5	.508	.020	30 x 30	1309	203	8600	5000	3500	39.0	22.7	15.9
			1.02	.040	20 x 20	2000	310	11400	6600	4700	52.0	30.0	21.4
	508	20	.508	.020	30 x 30	1677	260	9000	5400	3800	40.9	24.6	17.3
			1.02	.040	20 x 20	2567	398	12000	7200	5000	54.5	32.7	22.7
Water and Aqueous Solutions	394	15.5	.508	.020	30 x 30	1309	203	Up to 200			Up to 6.5°		
			.508	.020	30 x 30	1677	260	20000	22000	91.0	100.0		
	508	20	.508	.020	30 x 30	1677	260	40000	42250	182.0	192.0		

auto-klean® filter anything that flows



60P2 70R2

Type	Element Length	Dimensions					
		A	B	C	D	E	F
60P2	15.5	152mm 6"	718mm 28 1/4"	387mm 15 1/4"	854mm 33 3/8"	1083mm 42 5/8"	1016mm 40"
70R2	20"	178mm 7"	835mm 32 7/8"	479mm 18 7/8"	978mm 38 1/2"	1207mm 47 1/2"	1118mm 44"

**auto-klean® filtration limited**

Engineers in Filtration

Unit 11a, Ascot Industrial Estate,  
Lenton Street,  
Sandiacre,  
Notts. NG10 5DJ, U.K.

Tel. 0870 421 4206  
Fax. 0870 421 4207

[www.auto-kleanfiltration.co.uk](http://www.auto-kleanfiltration.co.uk)  
E-Mail: [sales@hse-ltd.com](mailto:sales@hse-ltd.com)