

DESCRIPTION **auto-klean**® 80R3, 90R4, 10R5, 12R6, 12R7, 12R8 and 12R9 self-cleaning filters constitute a range of multi-element units for high flow rates incorporating up to nine filter elements in a single body. Of all-metal plate-type construction, these filters operate on the edge-filtration principle. They are cleaned without interrupting the flow of liquid by giving each element one complete turn by means of the ratchet lever attached to the element spindle. This deposits all the solids accumulated around the elements into the filter sump. The filter bodies incorporate support brackets, pressure gauge bosses, a drain valve and sludge door as standard fittings. When required, magnetic inserts are incorporated in the filter body to give additional protection against micronic ferrous particles. The filters can be supplied with electric motor units for fully automatic or continuous cleaning. For high temperature service steam-jacketed designs are available.

APPLICATIONS All grades of oils and distillates, water, process oils, chemicals, beverages, paints, greases and industrial liquids of most kinds.

ELEMENTS

Diameter	145mm (5.7")	
Length	508mm (20") nett.	
Mesh	.076mm (.003")	.127mm (.005")
	.203mm (.008")	.254mm (.010")
	.508mm (.020")	1.016mm (.040")
	1.524mm (0.60")	2.032mm (0.80")

CONNECTIONS 203.2mm (8"), 228.6mm (9"), 254mm (10")
304.8mm (12") to B.S. Table E.

PRESSURE Maximum Working 5.27 Kg/cm² (75lb/in²)
Test 10.55 Kg/cm² (150lb/in²)

MATERIALS

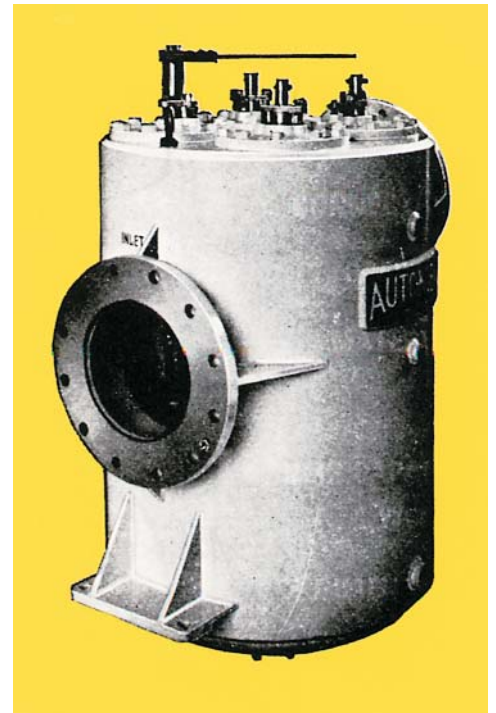
Standard	Body	Mild Steel
	Cover	Cast Iron
	Internals	Mild or Stainless Steel, Brass
Special	Body & Cover	Mild or Stainless Steel

SUMP CAPACITY See table below

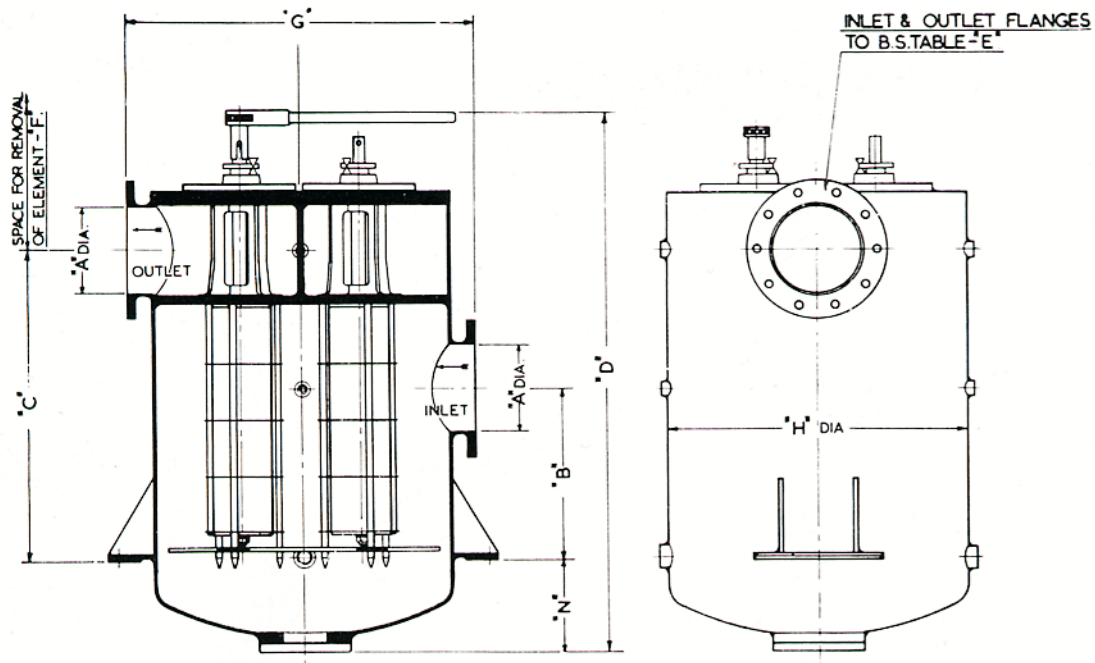
WEIGHT Filter complete See table below
Element only 47kg (104lb)

DIMENSIONS See table on page 2

FLOW RATES The capacities listed below are based on a pressure drop of .1 to .15 Kg/cm² (1.5 to 2 lb/in²) across a clean element for Engine Lubricating Oil and Heavy Machine Lubricating Oil. Capacities for other liquids and filter meshes will be quoted on request.



Type	Auto-Klean Mesh		Equivalent Gauze Mesh	Free Area		Capacity						Weight		Sump Capacity	
	mm	in		cm ²	in ²	Gallons Per Hour			Metres ³ Per Hour			kg	lb	Litres	Galls
						Viscosity Seconds Redwood No.1			Viscosity Engler Degrees						
						250	1000	2000	8.1°	32.5°	65°				
80R3	.076	.003	150 x 150	519	96	27000	9000	4800	122.7	40.9	21.8	408	900	45.5	10
	.127	.005	100 x 100	967	150	39000	18000	9000	177.3	81.8	40.9				
	.203	.008	80 x 80	1406	218	48000	27000	15000	218.2	122.7	68.2				
90R4	.076	.003	150 x 150	826	128	36000	12000	6400	163.6	54.5	29.1	499	1100	54.5	12
	.127	.005	100 x 100	1290	200	52000	24000	12000	236.4	109.1	54.5				
	.203	.008	80 x 80	1877	291	64000	36000	20000	290.9	163.6	90.9				
10R5	.127	.005	100 x 100	1613	250	65000	30000	15000	295.5	136.4	68.2	612	1350	68.2	15
	.203	.008	80 x 80	2348	364	80000	45000	25000	363.7	204.6	113.7				
12R6	.127	.005	100 x 100	1935	300	78000	36000	18000	354.6	163.6	81.8	726	1600	86.4	19
	.203	.008	80 x 80	2819	437	96000	54000	30000	436.4	245.5	136.4				
12R7	.127	.005	100 x 100	2258	350	91000	42000	21000	413.7	190.9	95.5	816	1800	100	22
	.203	.008	80 x 80	3290	510	112000	63000	35000	509.1	286.4	159.1				
12R8	.127	.005	100 x 100	2580	400	104000	48000	24000	472.8	218.2	109.1	907	2000	100	22
	.203	.008	80 x 80	3754	583	128000	72000	40000	581.9	327.3	181.8				
12R9	.127	.005	100 x 100	2903	450	117000	54000	27000	531.9	245.5	122.7	1089	2400	136	30
	.203	.008	80 x 80	4425	656	144000	81000	45000	654.6	368.2	204.6				



TYPE 90R4

	A	B	C	D	F	G	H	J	K	L	M	N
	Inches											
	8	16	29	49	46	29	25	31	10	33	12	9
	9	16	29	49	47	32	27	34	10	36	12	9
	10	16	28	49	47	32	30	36	10	38	12	9
	12	17	27	50	48	38	33	40	10	42	12	9
	12	18	28	49	48	42	37	43.5	13.5	46	16	8
	12	18	28	49	48	42	37	43.5	13.5	46	16	8
	12	18	28	51	49	48	43	49.5	13.5	52	16	10
	Centimetres											
	20.3	40.6	73.7	124.5	116.8	73.7	63.5	78.7	25.4	83.8	30.5	22.9
	22.9	40.6	71.1	124.5	119.5	81.3	68.5	86.4	25.4	91.4	30.5	22.9
	25.4	40.6	71.1	124.5	119.5	86.4	76.2	91.4	25.4	96.5	30.5	22.9
	30.5	43.2	68.5	127.0	122.0	96.5	83.8	101.6	25.4	106.7	30.5	22.9
	30.5	45.7	71.1	124.5	122.0	106.7	94.0	110.5	34.3	116.8	40.6	20.3
	30.5	45.7	71.1	124.5	122.0	106.7	94.0	110.5	34.3	116.8	40.6	20.3
	30.5	45.7	71.1	129.5	124.0	121.9	109.2	125.7	34.3	132.1	40.6	25.4

auto-klean® filtration limited

Engineers in Filtration

Unit 11a, Ascot Industrial Estate,
Lenton Street,
Sandiacre,
Notts. NG10 5DJ, U.K.

Tel. 0870 421 4206
Fax. 0870 421 4207

www.auto-kleanfiltration.co.uk
E-Mail: sales@hse-ltd.com