



# TYPES FF60TME FF80T2ME FF60T FF80T2

**DESCRIPTION** **auto-klean® flushflo®** FF60TME, FF60T, FF80T2ME and FF80T2 self-cleaning filters are fitted with elements that are of all-metal wire-wound construction. They are cleaned without interrupting the flow of liquid by one complete turn of the element spindle, which causes the accumulated solids to be removed by a scraper and deposited into the filter sump. At the same time the filter outlet pressure is utilised to cause a reverse flow of clean liquid through the element into a slot in the hollow scraper. This flushes away the small solids trapped by the mesh out of reach of the scraper blade. The contaminated flushing liquid is ducted through the filter body to a discharge valve and is either led to waste or cleaned in a sediment collector incorporated in the filter and returned to the system. The sediment collector, when fitted, is a small Auto-Klean plate type filter.

FF60TME and FF80T2ME filters are supplied either with fully automatic or continuous drive for both the main filter and sediment collector. FF60T and FF80T2 filters are for manual operation only.

**APPLICATIONS** All grades of oils and distillates, water, chemicals, beverages, food products, paints, resins, greases, pulp and industrial liquids of every kind.

Auto-Klean Flushflo filters are particularly recommended for service with liquids containing a high proportion of abrasive solids.

**ELEMENTS** 230mm diameter x 450mm long (9" diameter x 18" long)  
Filters FF60T & FF60TME have one element.  
Filters FF80T2 and FF80T2ME have two elements.

Mesh .38mm (.0015") .076mm (.003") .127mm (.005")  
.203mm (.008") .254mm (.010") .381mm (.015")  
.508mm (.020") 1.016mm (.040")

**CONNECTIONS** 6" dia. BS10 Table E standard for FF60T & FF60TME filters.  
8" dia. BS10 Table E standard for FF80T2 & FF80T2ME filters.  
Metric alternatives to above are 150mm nominal bore and 200mm nominal bore.

**PRESSURE** Maximum Working 5.2 bar (75lb/in<sup>2</sup>)  
Test 10.5 bar (150lb/in<sup>2</sup>)

**MATERIALS** Body Mild Steel  
Cover S.G. Iron  
Internals Brass & Steel  
Wire Stainless Steel

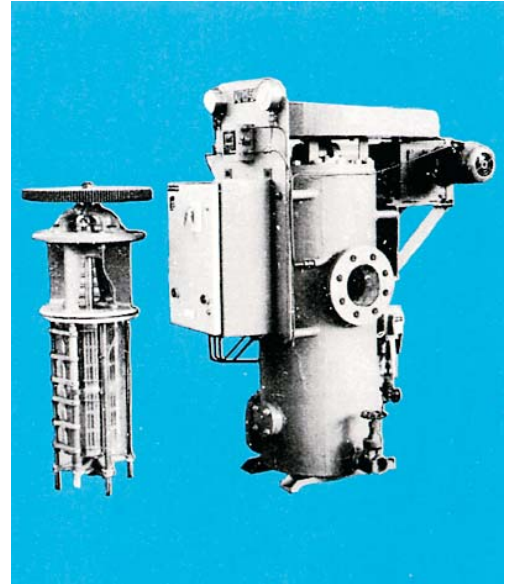
**SUMP CAPACITY** See table on page 2

**WEIGHTS** See table on page 2

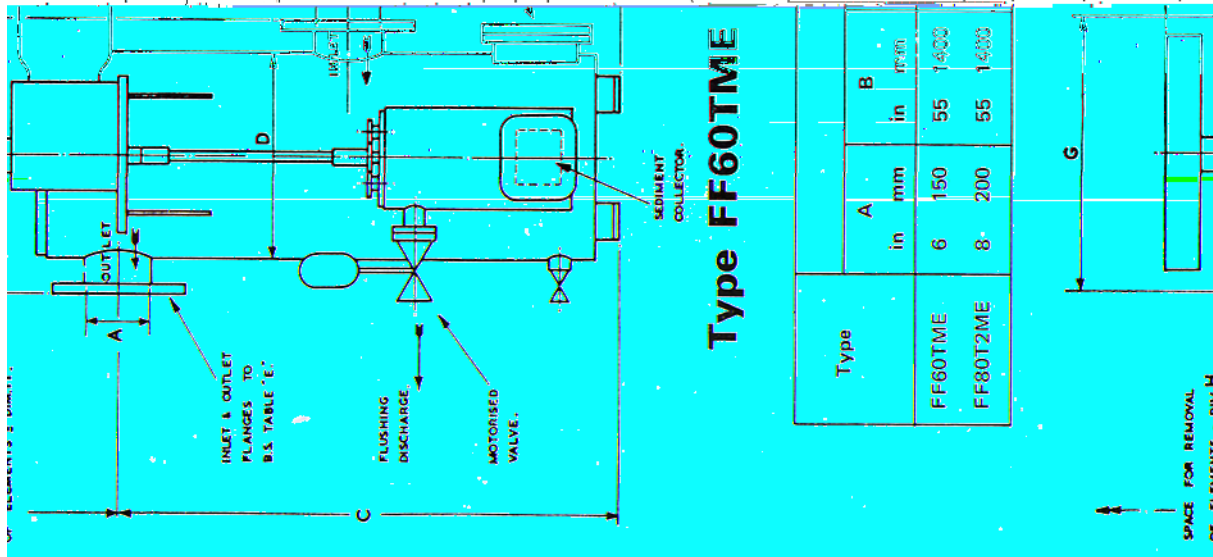
**DIMENSIONS** See drawing and table on page 2

**FLOW RATES** Auto-Klean Flushflo FF Filters must operate with outlet pressure not less than 0.7 bar (10 lb/in<sup>2</sup>). The flow-rates listed below cover only a limited range of applications. Capacities for other liquids and meshes will be quoted on request.

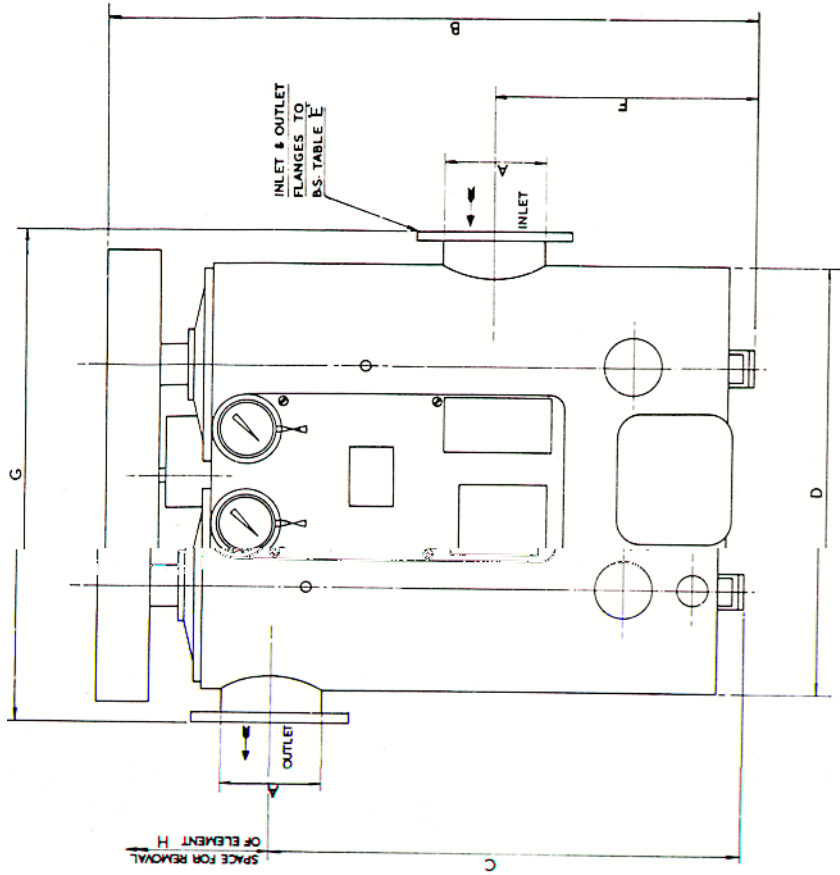
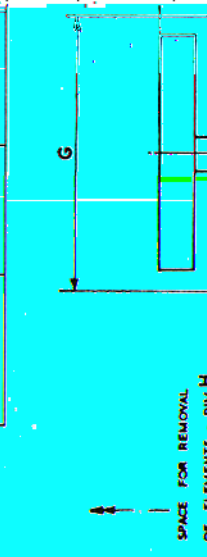
Maximum flow-rate per element under any condition: **273 metres<sup>3</sup> (60,000 gallons) per hour.**



Service	Auto-Klean Mesh		Equivalent Gauze Mesh	Capacity					
	mm	in		Filters with one element FF60TME & FF60T		Filters with two elements FF80T2ME & FF80T2			
				Gallons Per Hour	Metres <sup>3</sup> Per Hour	Gallons Per Hour	Metres <sup>3</sup> Per Hour		
Water (Single Pass) and Soluble Oils (Recirculating)	.075	.003	150 x 150 100 x 100 80 x 80	15000	68	30000	136		
	.125	.005		30000	136	60000	272		
	.200	.008		35000	160	70000	320		
Lubricating Oils (Recirculating)	.075 .125 .200	.003 .005 .008	150 x 150 100 x 100 80 x 80	Viscosity Seconds Redwood No.1		Viscosity Seconds Redwood No.1		Viscosity Engler Degrees	
				100 500		3.3° 16.2°		3.3° 16.2°	
				22900 9300	104 42	45800 18600	208 84		
			25200 13100	115 60	50400 26200	230 120			
			26800 16300	122 74	53600 32600	244 148			



Type	A		B	
	in	mm	in	mm
FF60TME	6	150	55	1400
FF80T2ME	8	200	55	1400



Dimensions				Sump Capacity		Weight	
C	D	F	G	H	Gall Ltr	cwt	kg
in	in	in	in	mm			
3 3/4	17	29 1/2	21	1270	9	6 1/4	330
4 1/4	36	55 9	41	1270	21	13	660

# auto-klean® filtration limited

Engineers in Filtration

Unit 11a, Ascot Industrial Estate,  
Lenton Street,  
Sandiacre,  
Notts. NG10 5DJ, U.K.

Tel. 0870 421 4206  
Fax. 0870 421 4207

www.auto-kleanfiltration.co.uk  
E-Mail: sales@hse-ltd.com