



TYPES

FX40XA5MA
FX70XA12MA
FX10XA24MA

FX60XA9MA
FX80XA18MA
FX12XA36MA

DESCRIPTION **auto-klean® fluxflo®** filters are a range of fully automatic self-cleaning units of advanced design providing clarification to micron limits. The filter consists of a number of elements arranged concentrically in a single body. Each element is cleaned in turn by the reverse flow of filtrate without interrupting the full flow through the filter. A very small quantity of filtrate is required to clean the elements and this is ducted to a sediment tank whence it may be recovered by the special reclaim system associated with this type of filter. **auto-klean® fluxflo®** filters are supplied in modular form complete with sediment tank, secondary filter, ancillary pumps and instrumentation. Individual components can be supplied separately if the installation so demands. These filters are designed for fully automatic operation in unmanned installations. Manually controlled models are also available if required.

APPLICATIONS Filtrations of lubricating oil for turbines, large marine diesel engines, high and medium speed diesel engines, test bed systems and large capacity industrial systems

ELEMENTS

Diameter	101.6mm (4")
Length	762mm (30" nett)
Mesh	15 microns

Special elements below and above 15 microns available to order

CONNECTIONS

Type	FX40XA5MA	100mm (4")
	FX60XA9MA	150mm (6")
	FX70XA12MA	175mm (7")
	FX80XA18MA	200mm (8")
	FX10XA24MA	250mm (10")
	FX12XA36MA	300mm (12")

PRESSURE

Maximum Working	7.0 bar (100lb/in ²)
Test	10.5 bar (150lb/in ²)

TEMPERATURE Maximum 110°C (230°F)

MATERIALS

Standard	Body & Cover	Mild Steel
	Internals	Brass/Steel with Aluminium Alloy formers and Stainless Steel gauze

WEIGHTS See table below

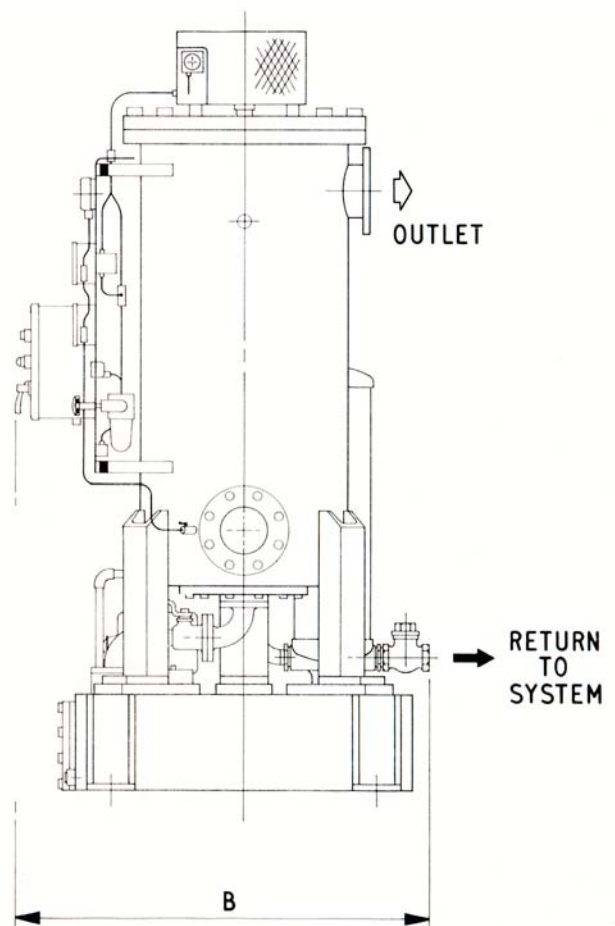
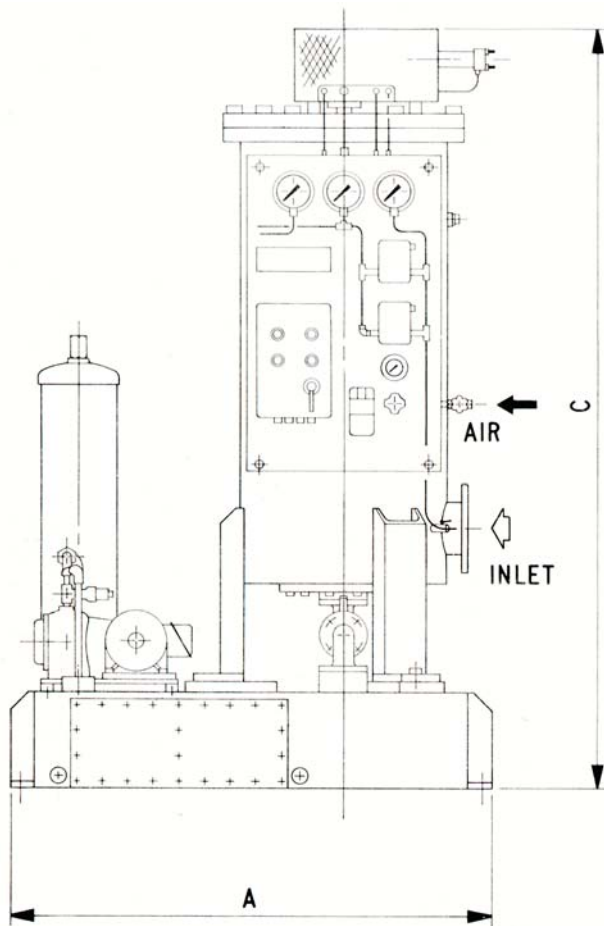
DIMENSIONS See table below

FLOW RATES The capacities listed below are based on 15 micron filtration with a pressure differential of 0.2 bar (2.8 lb/in²) across the filter using engine lubricating oil.



Type	Capacity Gallons Per Hour			Capacity Metres ³ Per Hour			Overall Dimensions						Weight Kg
							A. in	Length mm	B. in	Width mm	C. in	Height mm	
	Viscosity Seconds Redwood No.1			Viscosity Degrees Engler									
	200	300	600	6.5°	9.8°	19.5°							
FX40XA5MA	12800	9600	4900	58	44	22	54	1370	48	1220	95	2410	610
FX60XA9MA	25600	19200	9760	116	87	44	54	1370	52	1320	95	2410	815
FX70XA12MA	35200	26400	13400	160	120	61	57	1450	53	1350	97	2460	915
FX80XA18MA	54400	40800	20700	247	185	94	59	1500	52	1320	99	2510	1120
FX10XA24MA	73600	55200	28000	335	251	127	71	1800	64	1630	103	2620	1220
FX12XA36MA	112000	84000	42700	509	382	194	71	1800	68	1730	107	2720	1525

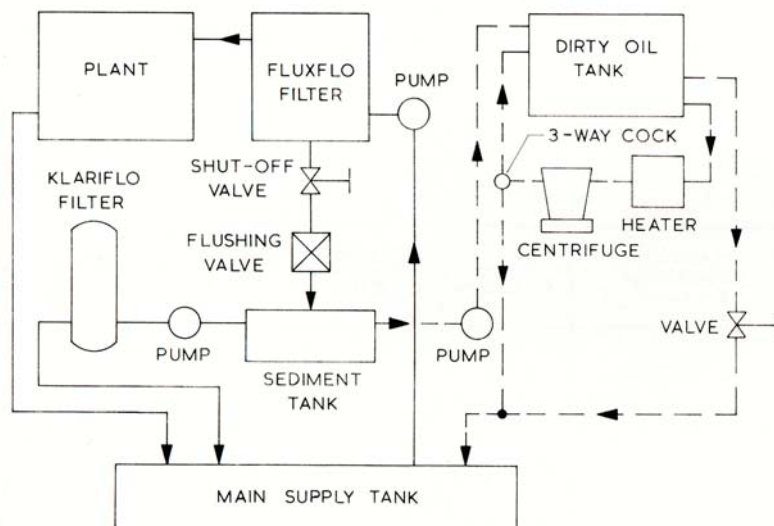
auto-klean® filter anything that flows



INSTALLATION

It is essential that the filter outlet pressure during operation should be maintained above 0.7 bar (10lb/in²). **auto-klean® fluxflo®** filters are normally installed on the discharge side of a pump as close as possible to the equipment being protected. If fitted on the suction side of a pump a minimum pressure head at least 12.2 metres (40 feet) must be maintained at the filter inlet.

If the unit is not supplied in modular form, the flushing discharge pipe from the filter to the sediment tank must be kept short with the minimum of bends. Sufficient headroom must be provided for the removal of elements for inspection if necessary.



ALTERNATIVE RECLAIM ARRANGEMENTS WHEN OIL IS BEING FILTERED

1. The contaminated reflux oil may be pumped from the sediment tank through an **auto-klean® klariflo®** filter and returned to the main supply tank.
2. Alternatively the contaminated reflux oil may be pumped direct from the sediment tank to the dirty oil tank for eventual treatment by centrifuging prior to return to the main system. This method is indicated by the broken line in the diagram

auto-klean® filtration limited

Engineers in Filtration

Unit 11a, Ascot Industrial Estate,
Lenton Street,
Sandiacre,
Notts. NG10 5DJ, U.K.

Tel. 0870 421 4206
Fax. 0870 421 4207

www.auto-kleanfiltration.co.uk
E-Mail: sales@hse-ltd.com