



TYPE LN FILTER

DESCRIPTION **auto-klean® lolos®** LN filter elements of the screw-type are all-metal wire-wound construction. They consist of a round-sectioned wire firmly wound on to a central former and locked by a special method to ensure that it cannot become loose. The liquid flow is from the outside to the inside of the element and all solids larger than the predetermined mesh are trapped on the external surface.

The male or female screwed connection of the filter element is in each case a standard B.S.P. fitting.

APPLICATIONS Hydraulic oils and solutions, lubricating and fuel oils, light distillates, petrol, water and chemicals.

Lolos LN elements are designed primarily for fitting as a suction line filters but they can also be used as discharge filters in a suitable housing.

ELEMENTS Diameter & Length. See table on page 2.
 Mesh .025mm (.001") .038mm (.0015") .076mm (.003")
 .127mm (.005") .203mm (.008") .254mm (.010")
 .381mm (.015") .508mm (.020") .762mm (.030")
 1.016mm (.040")

CONNECTIONS Up to 1½" BSP. See table on page 2

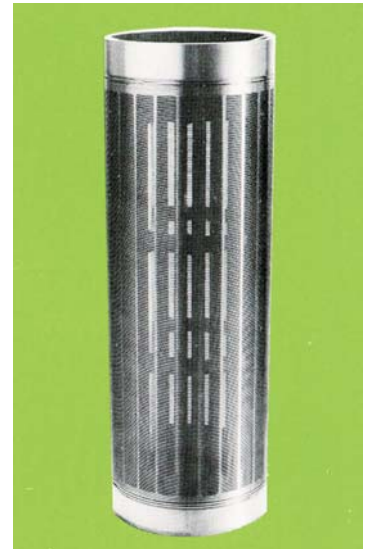
PRESSURE Up to any required maximum working pressure.

MATERIALS Standard Former Wire Aluminium Alloy or Brass
 Stainless Steel
 Special Former Wire Stainless Steel or Monel
 Stainless Steel or Monel

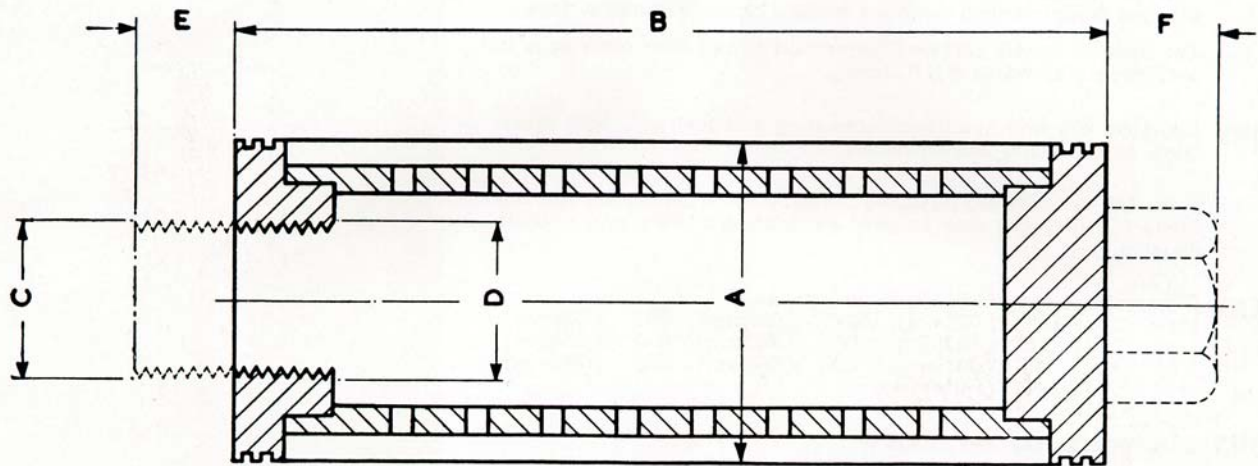
DIMENSIONS See drawing and table on page 2.

FLOW RATES The flow rates listed below cover only a limited range of applications. Capacities for other liquids and filter meshes will be quoted on request.

The ratings are based on a maximum pressure loss when clean of 35mbar (0.5lb/in) for suction filters and 52mbar (0.75lb/in) for discharge filters.



Type LN	Connections	Auto-Klean Mesh		Equivalent Gauze Mesh	Capacity Gallons Per Hour						Capacity Litres Per Hour					
		mm	in		Suction Filter			Discharge Filter			Suction Filter			Discharge Filter		
					Viscosity - Seconds Redwood No.1									Viscosity - Degrees Engler		
					200	400	800	200	400	800	6.5°	13°	26°	6.5°	13°	26°
015045	½" BSP or ¾" BSP male	.076 .203	.003 .008	150 x 150 80 x 80	140 180	90 140	50 90	190 230	130 190	75 130	636 818	409 636	227 409	864 1046	591 864	341 591
025035	1" BSP female	.076 .203	.003 .008	150 x 150 80 x 80	210 290	125 210	65 125	285 380	180 285	100 180	955 1318	568 955	296 568	1296 1727	818 1296	455 818
020057	1" BSP male	.076 .203	.003 .008	150 x 150 80 x 80	245 320	155 245	85 155	330 410	220 330	125 220	1114 1455	705 1114	386 705	1500 1864	1000 1500	568 1000
025075	1" BSP female	.076 .203	.003 .008	150 x 150 80 x 80	300 355	220 300	130 220	390 450	300 390	190 300	1364 1614	1000 1364	591 1000	1773 2046	1364 1773	864 1364
025101	1" BSP female	.076 .203	.003 .008	150 x 150 80 x 80	325 370	255 325	165 255	420 465	340 420	235 340	1477 1682	1159 1477	750 1159	1909 2114	1546 1909	1068 1546
030095	1½" BSP female	.076 .203	.003 .008	150 x 150 80 x 80	575 735	380 575	210 380	765 945	530 765	310 530	2614 3341	1728 2614	955 1728	3478 4296	2409 3478	1409 2409



TYPE LN

Type LN	Nominal Size of Element		Dimensions									
	Dia.	Nett Length	A		B		C	D	E		F	
			in	mm	in	mm	BSP	BSP	in	mm	in	mm
015045	1½"	4½"	1¼	32	5	127	½"	—	½	13	—	—
							¾"	—	½	13	—	—
025035	2½"	3½"	2½	64	4	102	—	1"	—	—	—	—
020057	2"	5¾"	2	51	6 ½	156	1"	—	¾	16	¾	19
025075	2½"	7½"	2½	64	8	203	—	1"	—	—	—	—
025101	2½"	10¾"	2½	64	10¾	270	—	1"	—	—	—	—
030095	3"	9½"	3	76	10	254	—	1½"	—	—	—	—

auto-klean[®] filtration limited

Engineers in Filtration

Unit 11a, Ascot Industrial Estate,
Lenton Street,
Sandiacre,
Notts. NG10 5DJ, U.K.

Tel. 0870 421 4206
Fax. 0870 421 4207

www.auto-kleanfiltration.co.uk
E-Mail: sales@hse-ltd.com

Auto-Klean is a registered Trade Mark